

Four Windom Park Opportunity Sites



Four Windom Park Opportunity Sites



Hennepin County Property Map

Date: 8/8/2017



Hennepin County Property Map

Date: 8/8/2017



Hennepin County Property Map

Date: 8/8/2017

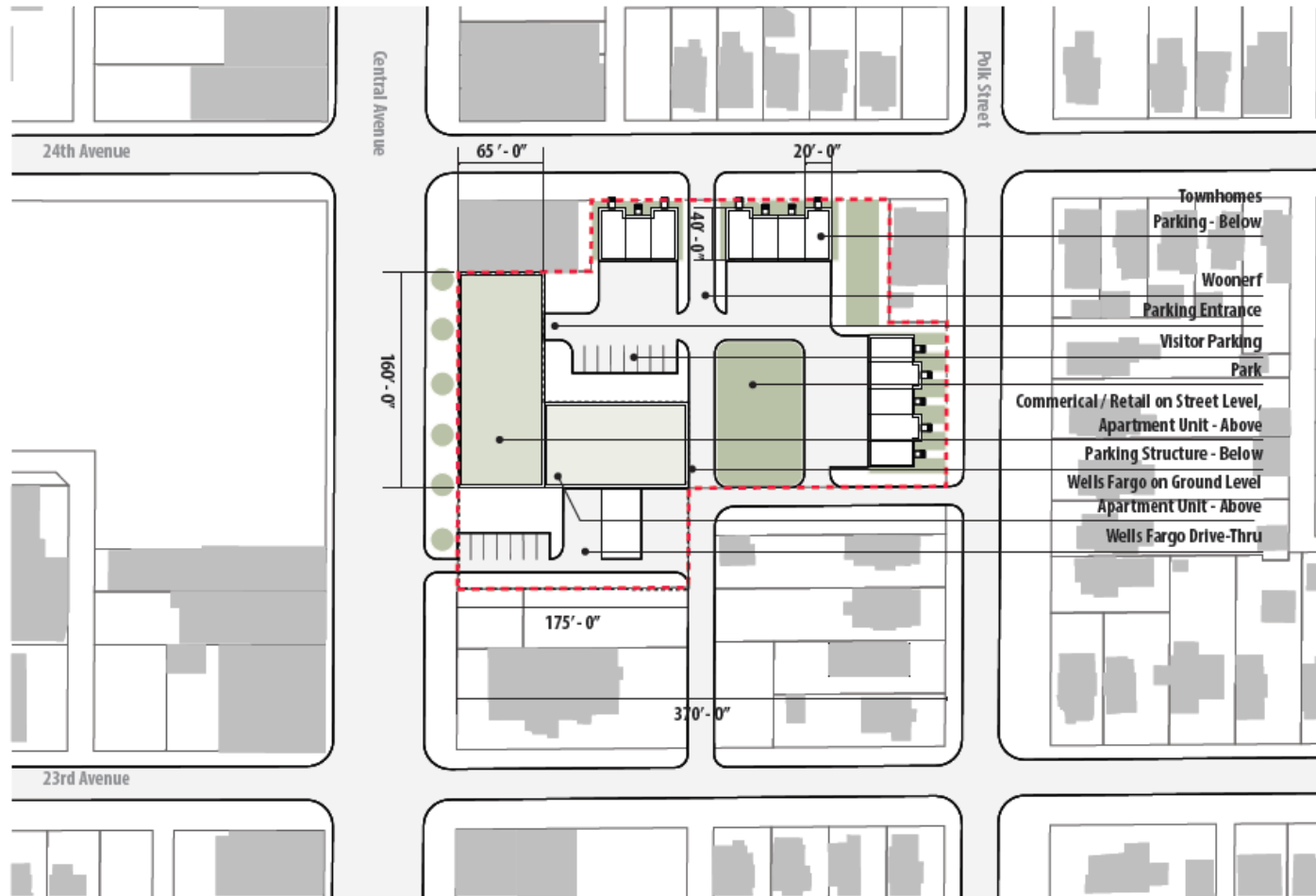


Hennepin County Property Map

Date: 8/8/2017



Conceptual Redevelopments (Wells Fargo)



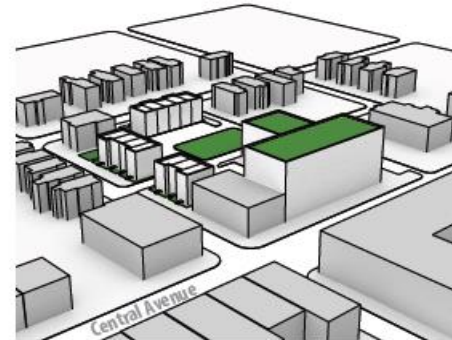
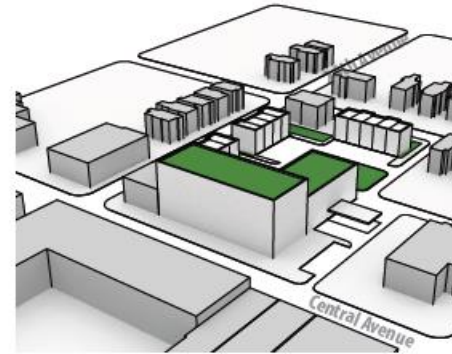
23rd Avenue and Central Avenue



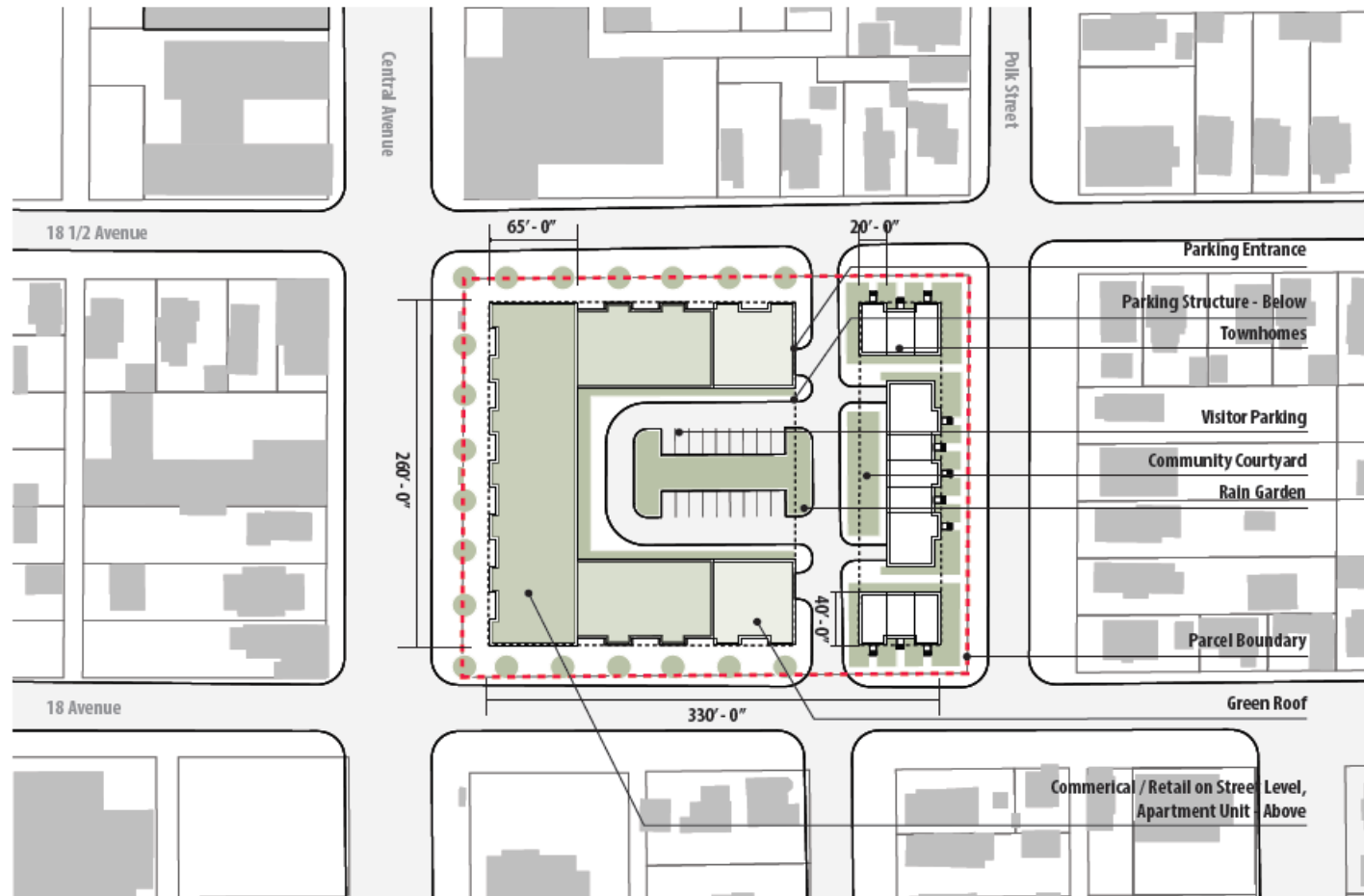
Conceptual Redevelopments (Wells Fargo)



23rd Avenue and Central Avenue



Conceptual Redevelopments (MPHA Site)



18th Avenue and Central Avenue



Conceptual Redevelopments (Triangle Site)

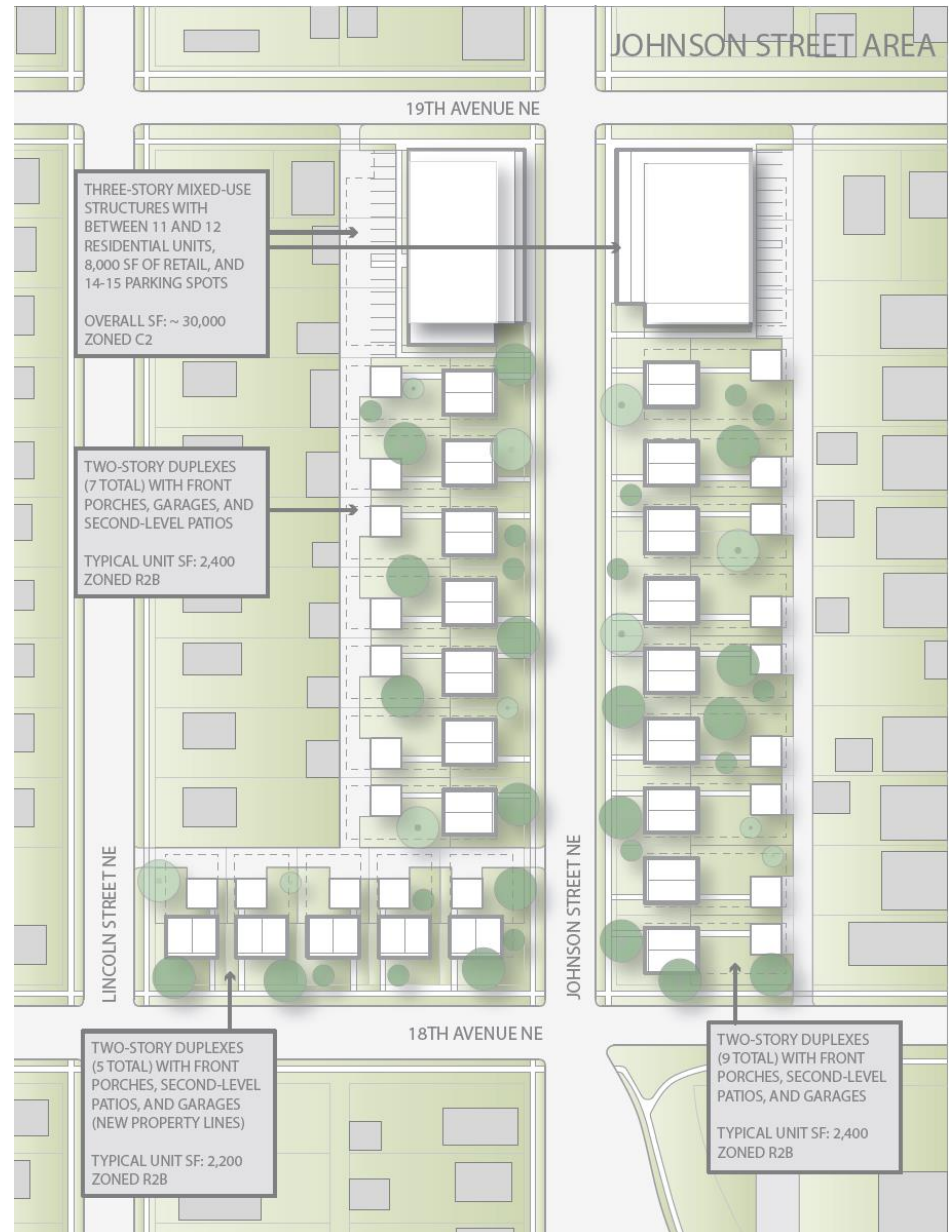


Conceptual Redevelopments (Triangle Site)



DETACHED DUPLEXES - LOOKING EAST FROM STINSON PARKWAY

Conceptual Redevelopments (Johnson Street/18th Avenue)

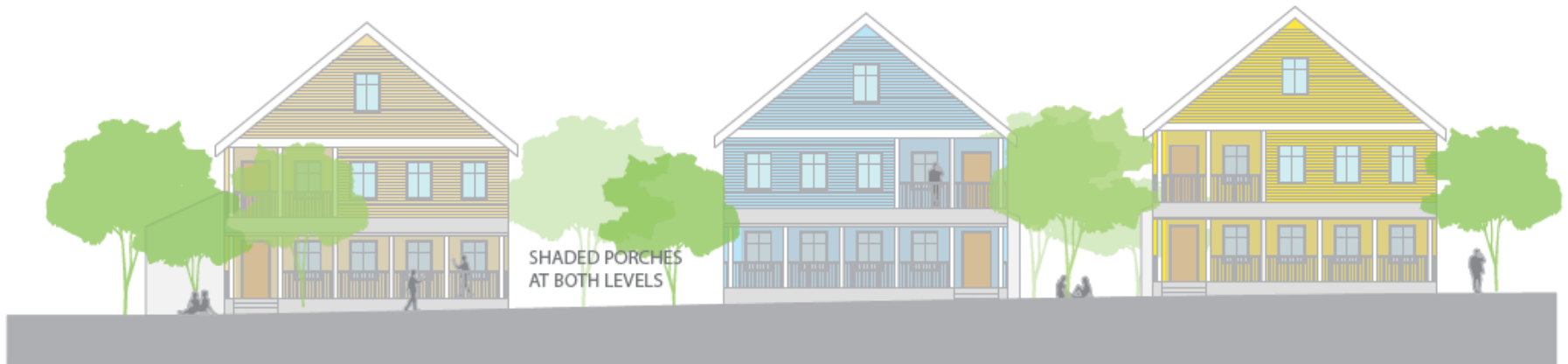


Conceptual Redevelopments (Johnson Street/18th Avenue)



MIXED-USE BUILDING - LOOKING EAST FROM JOHNSON STREET

Conceptual Redevelopments (Johnson Street/18th Avenue)



DETACHED DUPLEXES -LOOKING EAST FROM JOHNSON STREET

- Enhancing 22nd Bicycle Boulevard and bike facilities intersecting with it.
- Accessing the Diagonal Trail
- 18th Avenue NE opportunity zone. - Central & Johnson.
- Traffic calming on Central, Johnson and Stinson
- Supporting the Lowry Corridor Plan
- Can Windom Park building be used for something other than storage.
- Being pro-active about St. Anthony Village's proposed Kenzie Terrace high density district.
- Quarry Shopping Center access
- Interfacing with MPRB and County about intersections.



Enhance the 22nd Avenue Bike Boulevard

Include on the Mpls Bicycle Master Plan - 22nd between Arthur and New Brighton Blvd and Arthur Street north of 22nd avenue.

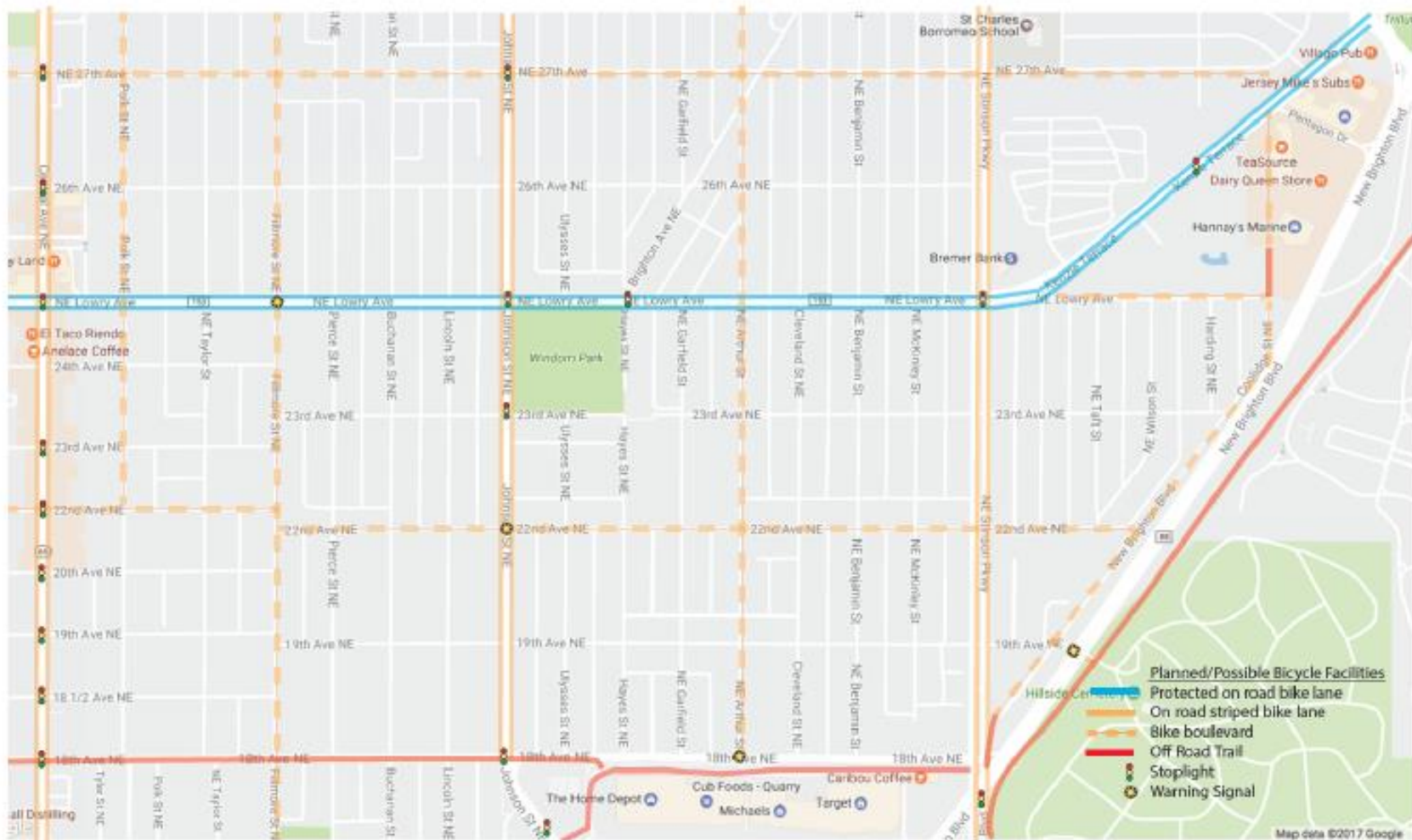
- Increase neighborhood connectivity between the Stinson Triangle and Windom Park east of Stinson Parkway and to the Audubon neighborhood.
- Better identify 22nd & Stinson Parkway as a significant pedestrian – bicycle crossing which is also a Safe Routes to Schools and MTC bus stops.)
- Act as a traffic calming application on Stinson Parkway between 18th and Lowry.
- Align better with 2011 Minneapolis Bicycle Master Plan 4.5.3 Spacing of Bikeways. (See attached recommendations

Add pavement markings on 22nd between Arthur and New Brighton Blvd. Arthur north of 22nd and New Brighton Blvd.

Consider mini traffic circles for traffic calming, way finding and neighborhood beautification at 22nd & Polk, 22nd & Ulysses, 22nd & Cleveland,

Assess stop sign locations to favor travel on the 22nd Avenue Bike Boulevard.





Accessing the Diagonal Trail

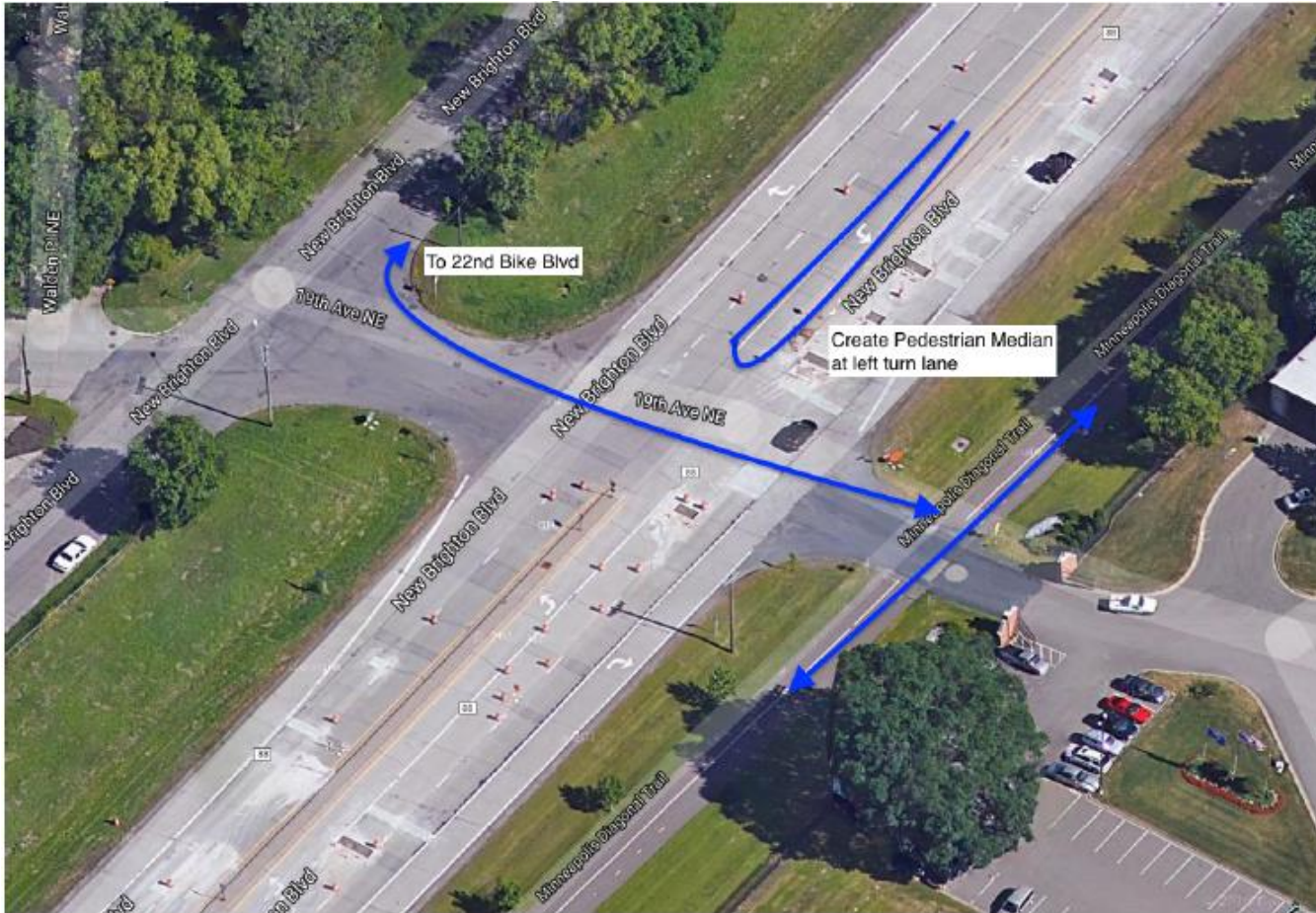


Kenzie Terrace/Silver Lake Road and New Brighton Blvd/CSAH88 intersections with St. Anthony Boulevard.

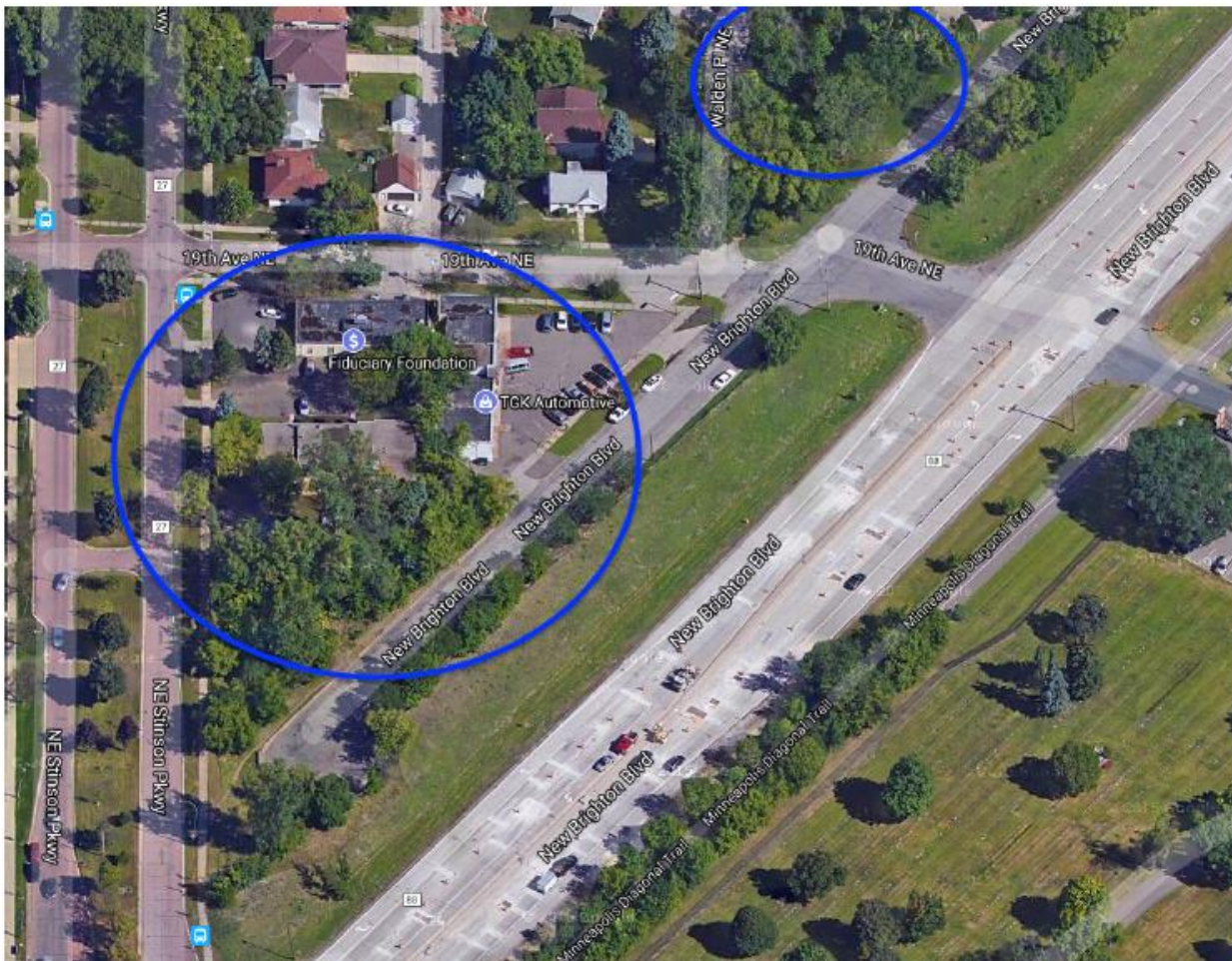


January 2013





19th Avenue NE & New Brighton Blvd /CSAH 88



Opportunity site bordered by Stinson Parkway, 19th Avenue NE and New Brighton Blvd. Parklet bordered by Walden Place and New Brighton Blvd.



Stinson Blvd & New Brighton Blvd/CSAH 88 Crossing



